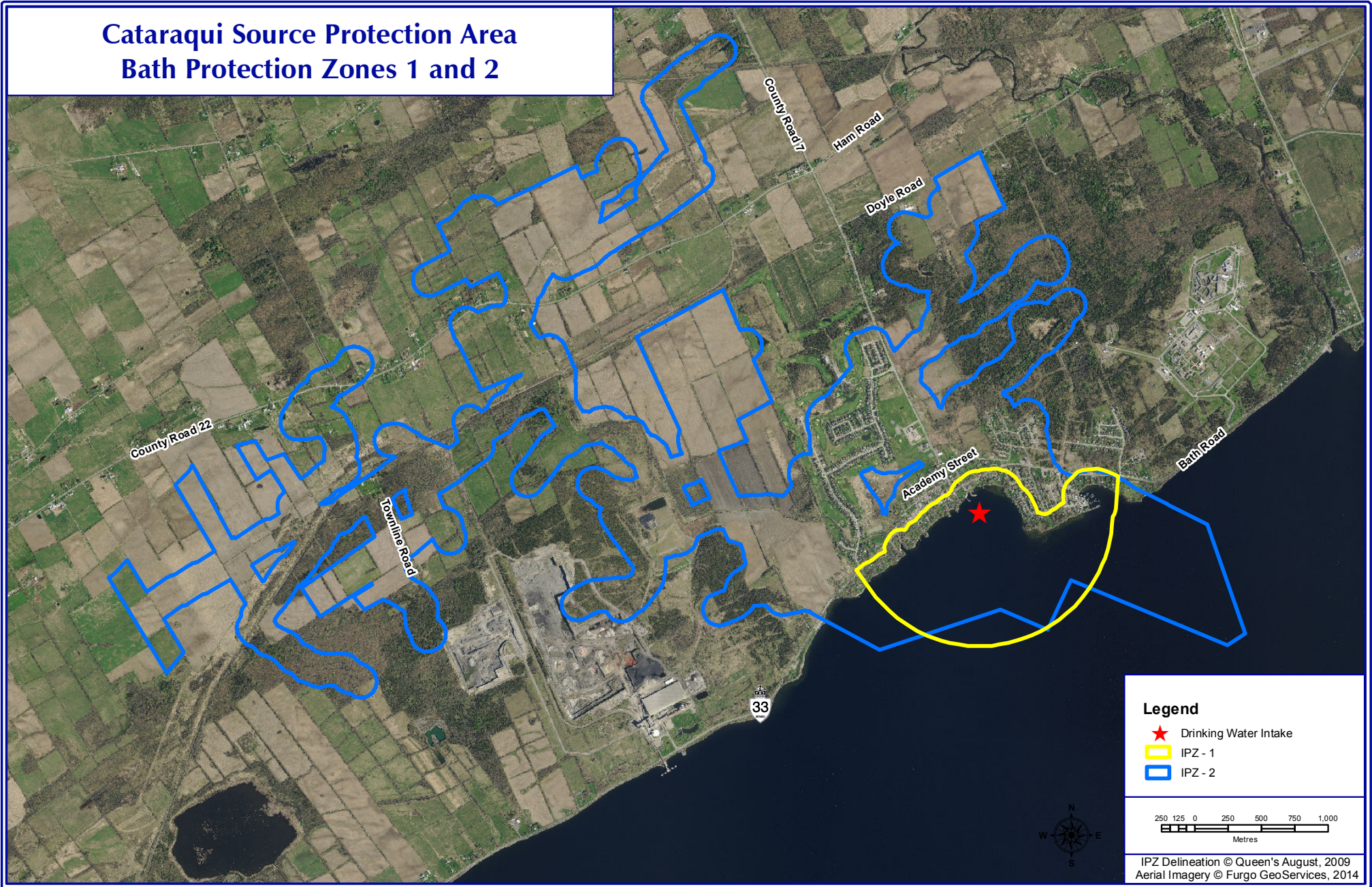


Cataraqui Source Protection Area Bath Protection Zones 1 and 2



Bath Drinking Water Supply



**CATARAQUI REGION
CONSERVATION AUTHORITY**

1641 Perth Road, P.O. Box 160
Glenburnie, Ontario K0H 1S0

Phone: (613) 546-4228
Toll Free: 1-877-956-CRCA (2722)

Email: info@crca.ca
Website: www.crca.ca &
www.cleanwatercataraqui.ca
Facebook: [CataraquiRegionCA](https://www.facebook.com/CataraquiRegionCA)
Twitter: [@CataraquiRCA](https://twitter.com/CataraquiRCA)

cleanwatercataraqui.ca

Bath Drinking Water Supply

Your Drinking Water

The Bath water treatment plant in Loyalist Township draws water from Lake Ontario via an intake pipe. This source of water is treated and distributed to about 2,660 residents in the village of Bath and the population within the nearby Correctional Services Canada facilities. The intake pipe is located about 140 metres offshore at a depth of 3.4 metres.

You Live in an Intake Protection Zone

As per the *Clean Water Act*, an Intake Protection Zone (IPZ) is the land and water around an intake pipe that supplies drinking water to a municipal residential system, where actions must or should be taken to protect the drinking water supply (see diagram on right).

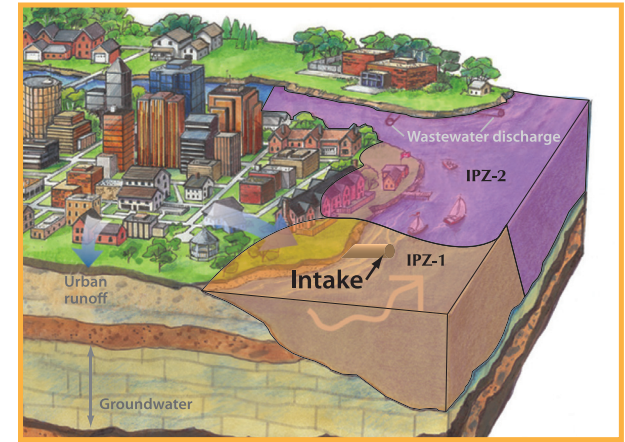
Bath IPZ is made of two parts:

- IPZ-1 is the area closest to the intake pipe and is a set distance which extends one kilometre upstream and 120 metres onto the shore.
- IPZ-2 includes the on and offshore areas where flowing water and any pollution would reach the intake pipe within two hours.

A map of the Bath IPZ is provided on the back of this page.

Protecting the Source Water

Source water protection means protecting our sources of drinking water such as lakes, rivers, and groundwater from being contaminated or overused. Source water protection is important because it is much easier to keep water clean than it is to try and clean it up after it has been polluted.



Intake Protection Zone

More Information

At cleanwatercataraqui.ca under the 'resources' tab you can access many useful resources including:

- Interactive maps to help you find out how you are affected by the Cataraqui Source Protection Plan and Part IV of the *Clean Water Act*.
- Fact sheets, FAQs, and primers to find out more about the Cataraqui Source Protection Plan, and Part IV of the *Clean Water Act*.
- Best Practices for homeowners.

Questions?

If you have any questions about your vulnerable area or the Cataraqui Source Protection Plan, please contact:

Holly Evans, Environmental Technician
Cataraqui Region Conservation Authority

Email: hevans@crca.ca
Phone: 613-546-4228 ext. 233
Toll-free: 877-956-2722